



EAST 2018

www.londonjobsfair.co.uk

Snapshot of London Jobs Fair East 2018



Working in Partnership with:



Houses of
Parliament



London Jobs Fair Sponsors 2018

Making a Social Impact



Contents

- Introduction
- Headlines
- Launch of New Arts & Culture Zone
- Event Layout – 5 Specialised Zones
- #LJFE – Social Media was Buzzing
- Still Buzzing
- 100's of Opportunities for Job Seekers
- Positive Outcomes on the Day
- Benefits to Housing Association Partners
- Become a Partner

Introduction

3D Change, architects of the London Jobs Fair South are expanding their successful programme to reach jobseekers across the whole of London.

February 2018 saw the launch of the London Jobs Fair East at the Rich Mix Centre in Shoreditch, a venue well known for cultural diversity and the arts which provided the perfect backdrop for the new Arts and Culture Zone accompanying the well established Employment, Training, Workshop and Procurement Zones.

Partnering with the London Borough of Tower Hamlets and some of London's leading housing associations, the event is part of a wider programme to bring local jobs to local people and local contracts to local businesses. Targeting and supporting local unemployed people is the focus of the model coupled with excellent benefits to our loyal partners and sponsors (suppliers to the Housing Associations/Local Authorities).

The purpose of this summary review is to provide a snapshot of what happened on the day, including headline statistics. A full report is available upon request by emailing:

info@3dchange.co.uk

HEADLINES

Number of exhibitors = 50 

Pre-event registrations = 572 

Total footfall at event = 525* 

* Adverse weather conditions contributed to lower than anticipated footfall – the Beast from the East!!

Launch of NEW Arts & Culture Zone

6 zone specific exhibitors included:

**National
Theatre**



creative
& cultural
skills



CREATE
JOBS

The new zone was specifically aimed at reaching out to communities that typically would not consider working in this sector.

Event Layout – 5 Specialised Zones

1. Employers Zone
2. NEW Arts & Culture Zone
3. Procurement Zone
4. Training Zone
5. Workshop Zone



#LJFE – Social Media was Buzzing

TWITTER

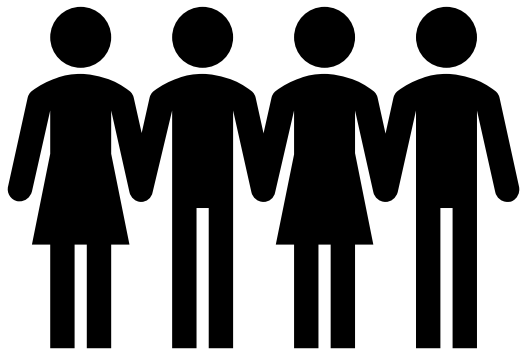
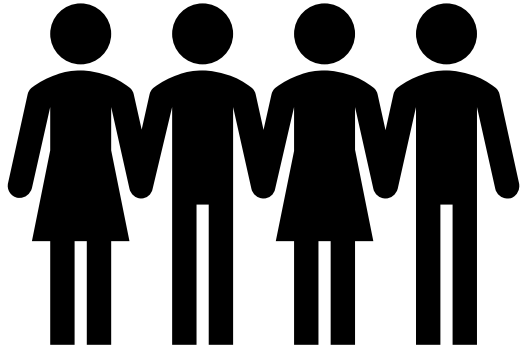
Accounts reached = 43,882 / Impressions = 126,560



FACEBOOK

Facebook reach = 31,018 / Shares = 365





100's of Opportunities for Job Seekers

490+ Opportunities

390+ Job Vacancies

100+ Apprenticeships /
Traineeships

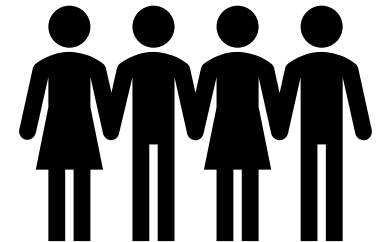
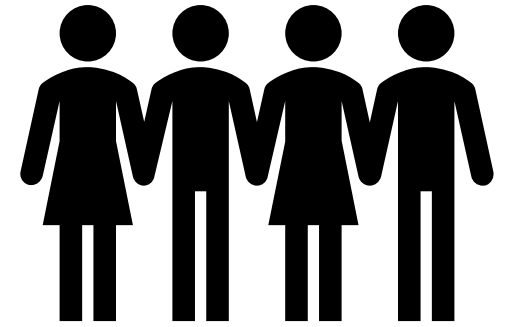
11 different sectors

Positive Outcomes on the Day

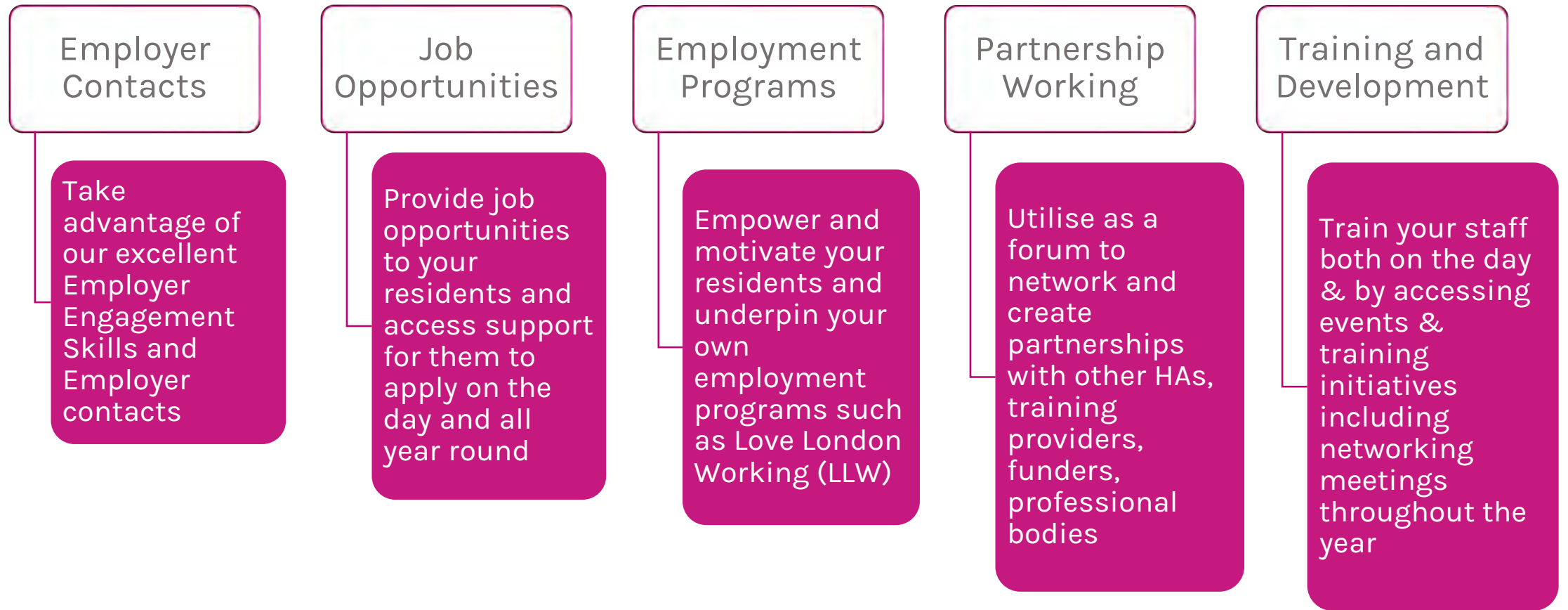
416 Applications made for Jobs, Training, Interviews

259 Interviews for Jobs, Training, Interviews

81 Scheduled meetings between suppliers/Partner HAs



Benefits to Housing Association Partners



Become a Partner

This unique housing led programme with all partners working together brings 100's of job opportunities to job seekers where ever they are on their journey into employment.

It also provides an array of openings to partners, including opportunities to engage with supply chains and to meet those suppliers that are contributing to social value.

The number of our housing association partners are growing and we are looking forward to welcoming new ones.

Please contact us if you would like an informal discussion or if you wish to receive any further information.

info@3dchange.co.uk

Tel: 0203 828 1355

**Our next event will be held at the newly refurbished
Lambeth Town Hall on 21st June 2018.**